



Guardian® Checkmate Bracket

➤ Assembly & Operation Guide

Contents

Fitting device into Bracket	4
PORTA GANTRY <small>[RAPIDE]</small> 500	6
PORTA GANTRY <small>[RAPIDE]</small> 1000	8
PORTA GANTRY [®] Small & Medium	10
PORTA GANTRY [®]	12
T DAVIT [®]	14
PORTA DAVIT <small>[QUANTUM]</small> Column	16
PORTA DAVIT <small>[QUANTUM]</small> Backstay	18
PORTX [®] DAVIT Single Winched	20
PORTX [®] DAVIT Double Winched	22

Lightweight. Portable. **Safe.**

Please read the following instructions and guidance notes carefully. These have been designed to aid users in carrying out the correct assembly of the bracket for each of our compatible lifting systems. Systems compatible with this product are:

- **PORTA**GANTRY^[RAPIDE]
- **PORTA**GANTRY^[]
- **T**DAVIT^[]
- **PORTA**DAVIT^[QUANTUM]
- **PORTX**^[] DAVIT

General Specification

- Maximum rated capacity for personnel lifting - 330lb
- Ensure the rating of the Winch is always checked before use
- For use with REID lifting products only

Standards

- Complies with the requirements of OSHA 1910 sub part I (.140) & 1926 sub part M

For further information please refer to the technical data sheet for this product.

➤ Assembly Instructions: Fitting the Device

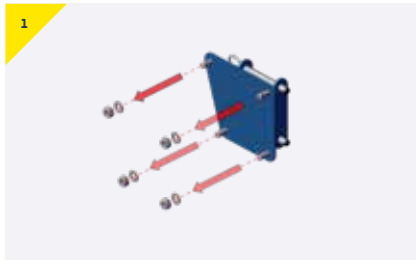
The following instructions detail the assembly of the Guardian Checkmate device into the universal bracket.



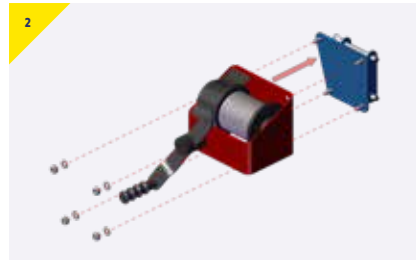
Appropriate PPE should be worn: ➤ **Gloves** ➤ **Protective Footwear**

Guardian® Checkmate Bracket

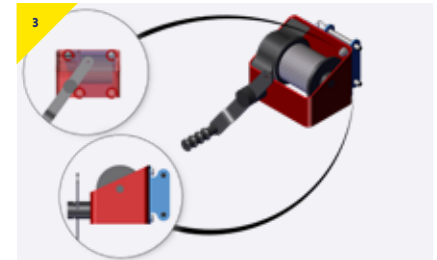
Assembling the **Guardian Checkmate Winch** on to the connecting plate.



- Remove the washers and nyloc nuts from the bracket.



- Present the device to the bracket, resecure the bolts using the washers and nyloc nuts.



- Adjust the position by tightening the hex bolts.

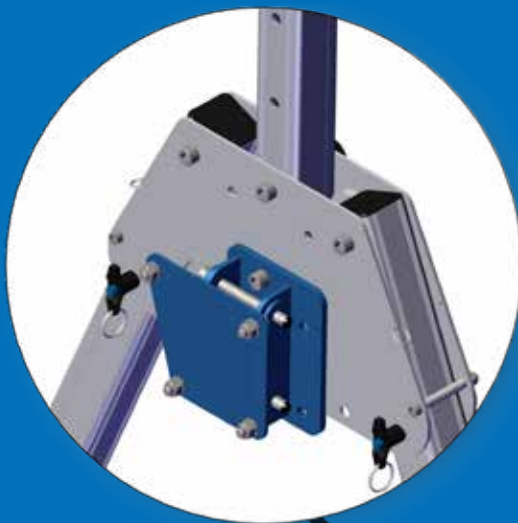


- The device is now ready to use.

5
Now install the product into face bracket, column or backstay.

➤ Assembly Instructions: PORTAGANTRY ^{RAPIDE} 500

The following instructions detail the assembly of the Guardian Checkmate bracket [US-RAWB001220] for the PORTAGANTRY ^{RAPIDE} 500kg.



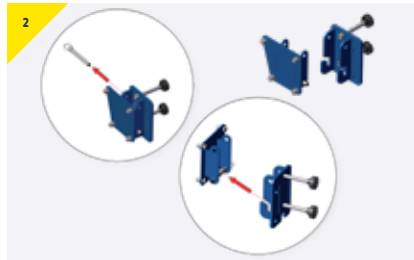
Appropriate PPE should be worn: ➤ Gloves ➤ Protective Footwear

Guardian® Checkmate Bracket - [US-RAWB001220]

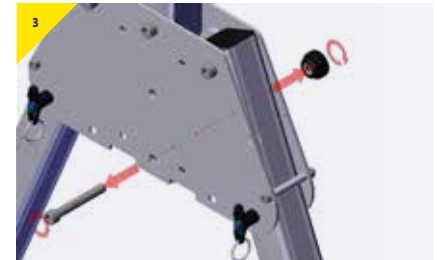
Assembling the **Guardian Checkmate Bracket** on **PORTAGANTRY[®] RAPIDE[®] 500**



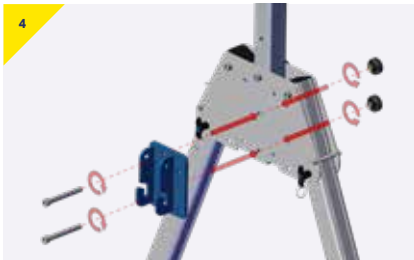
- The bracket comes with the pins and M12 bolts supplied, as shown above.



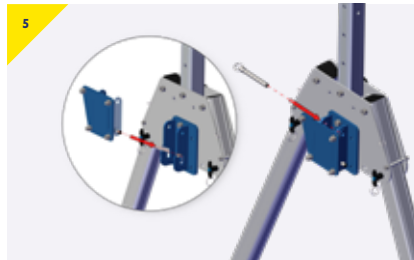
- Disassemble the bracket by removing the pins, bolts and separating the pieces.



- Remove the bottom bolt from the trap plate.



- Present the bracket to the trap plate and secure with the M12 bolts supplied. Ensure to align the lower bolt to the same hole as the bolt was just removed from.



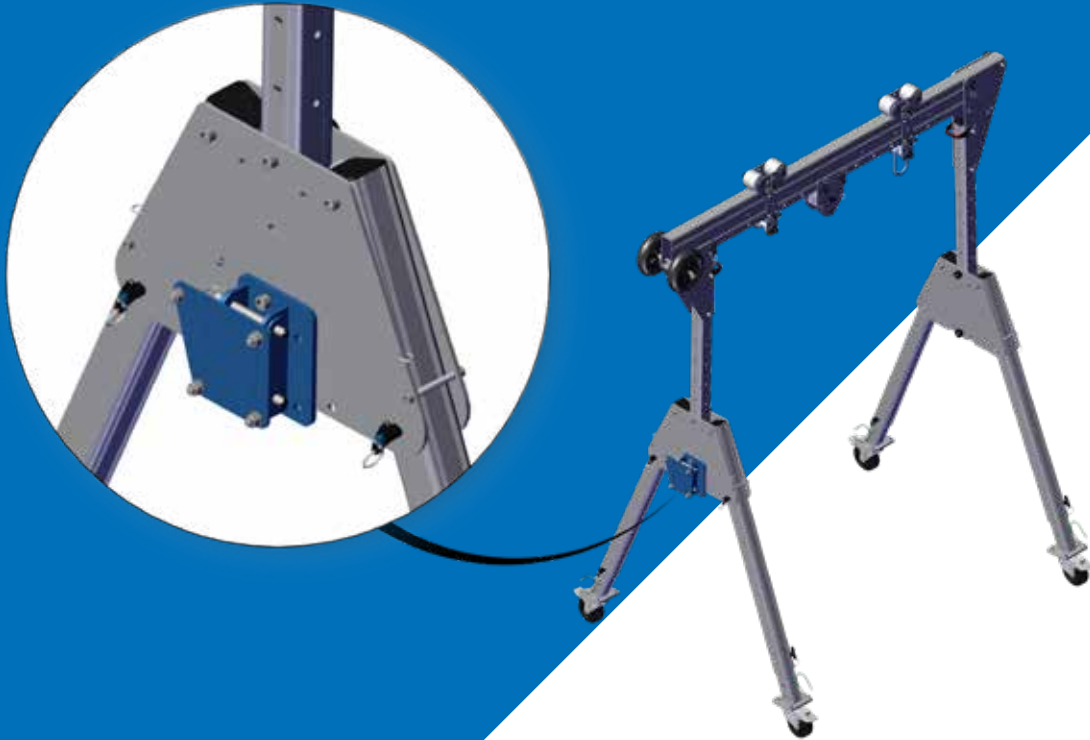
- Reassemble the bracket using the pins provided as shown. First the lower pin and slide into place and secure with the top pin.



- The bracket is secured and ready for the device to be attached.

➤ Assembly Instructions: PORTAGANTRY[®] RAPIDE[®] 1000

The following instructions detail the assembly of the Guardian Checkmate bracket [US-RAWB001220] for the PORTAGANTRY[®] RAPIDE[®] 1000kg.



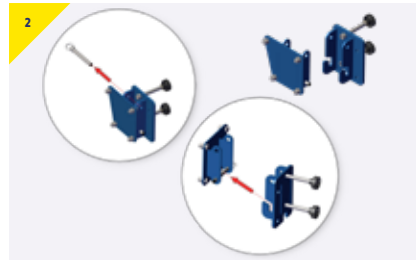
Appropriate PPE should be worn: ➤ Gloves ➤ Protective Footwear

Guardian® Checkmate Bracket - [US-RAWB001220]

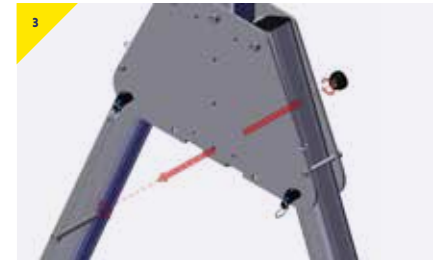
Assembling the **Guardian Checkmate Bracket** on **PORTAGANTRY[®] RAPIDE[®] 1000**



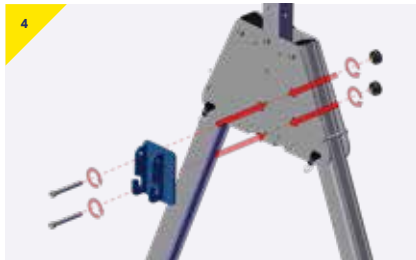
- The bracket comes with the pins and M12 bolts supplied, as shown above.



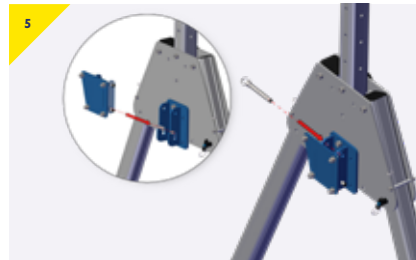
- Disassemble the bracket by removing the pins, bolts and separating the pieces.



- Remove the bottom bolt from the trap plate.



- Present the bracket to the trap plate and secure with the M12 bolts supplied. Ensure to align the lower bolt to the same hole as the bolt was just removed from.



- Reassemble the bracket using the pins provided as shown. First the lower pin and slide into place and secure with the top pin.



- The bracket is secured and ready for the device to be attached.

➤ Assembly Instructions: PORTAGANTRY® S & M

The following instructions detail the assembly of the Guardian Checkmate bracket [US-RAWB001220] for the PORTAGANTRY® Small and Medium frame sizes.



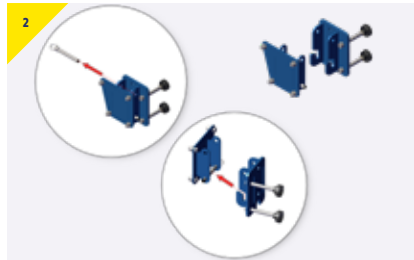
Appropriate PPE should be worn: ➤ Gloves ➤ Protective Footwear

Guardian® Checkmate Bracket - [US-RAWB001220]

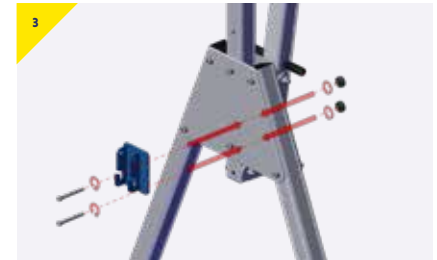
Assembling the **Guardian Checkmate Bracket** onto a small or medium **PORTA**GANTRY®



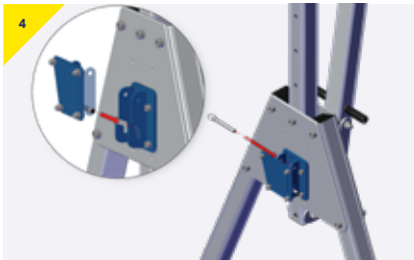
- 1 The bracket comes with the pins and M12 bolts supplied, as shown above.



- 2 Disassemble the bracket by removing the pins, bolts and separating the pieces.



- 3 Present the bracket to the trap plate as shown, secure both M12 bolts through the correct holes as shown.



- 4 Reassemble the bracket using the pins provided as shown. First the lower pin and slide into place and secure with the top pin.



- 5 The bracket is secured and ready for the device to be attached.

➤ Assembly Instructions: PORTAGANTRY®

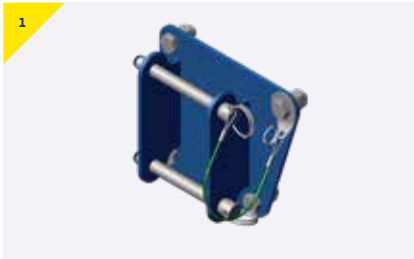
The following instructions detail the assembly of the Guardian Checkmate bracket [US-RAWB001200] for the PORTAGANTRY®.

Appropriate PPE should be worn: ➤ Gloves ➤ Protective Footwear

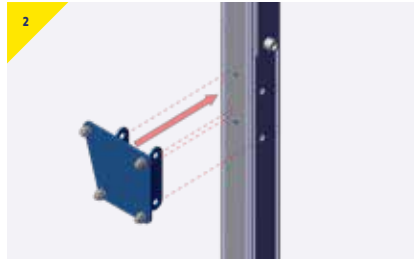


Guardian® Checkmate Bracket - [US-RAWB001200]

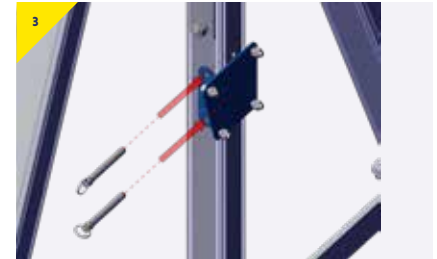
Assembling the **Guardian Checkmate Bracket** onto a **PORTAGANTRY®**



- 1 The bracket comes with the pins supplied, as shown above.



- 2 Remove the pins and present the bracket to the winch column, aligned to the holes as shown.



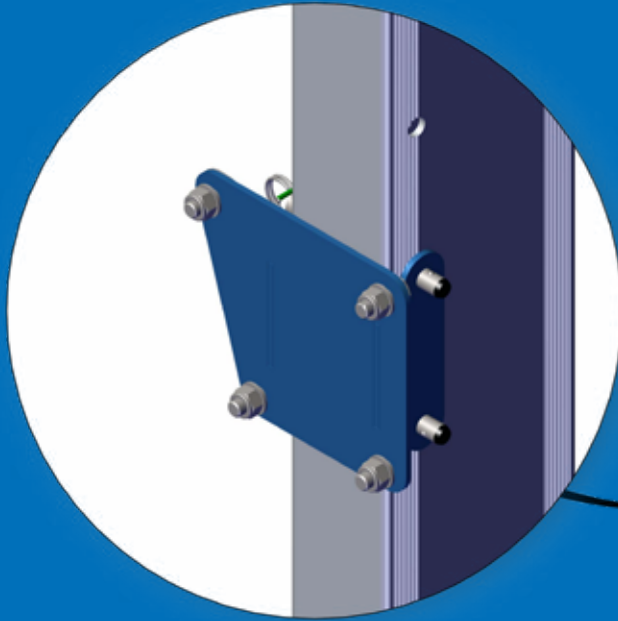
- 3 Insert both pins to ensure the bracket is securely attached.



- 4 The bracket is secured and ready for the device to be attached.

➤ Assembly Instructions: TDAVIT®

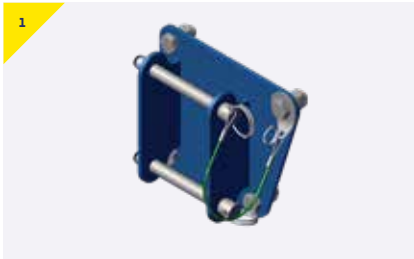
The following instructions detail the assembly of the Guardian Checkmate bracket [US-RAWB001200] for the TDAVIT.



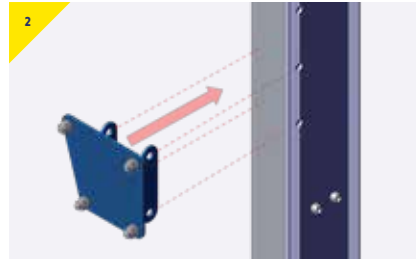
Appropriate PPE should be worn: ➤ **Gloves** ➤ **Protective Footwear**

Guardian® Checkmate Bracket - [US-RAWB001200]

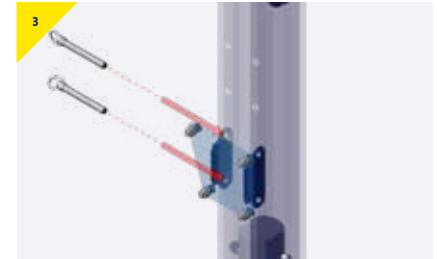
Assembling the **Guardian Checkmate Bracket** onto a **TDAVIT®**



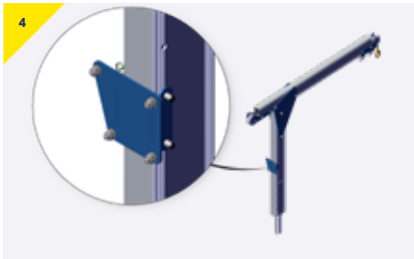
- > The bracket comes with the pins supplied, as shown above.



- > Remove the pins and present the bracket to the column, aligned to the holes as shown.



- > Insert both pins to ensure the bracket is securely attached.

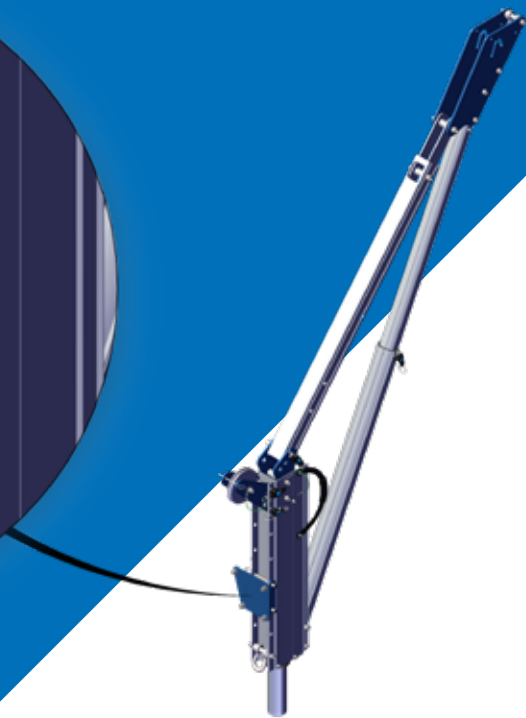
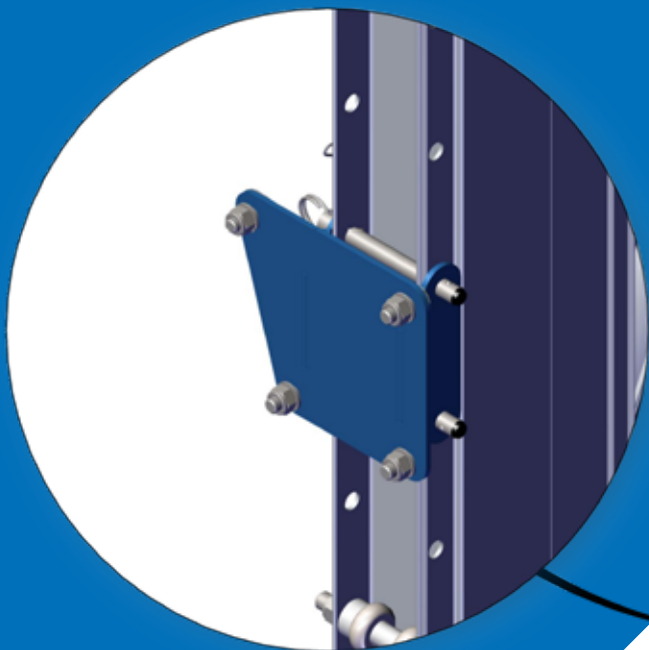


- > The bracket is secured and ready for the device to be attached.

➤ Assembly Instructions: PORTADAVIT[®] QUANTUM[®] Column

The following instructions detail the assembly of the Guardian Checkmate bracket [US-RAWB001200] for the PORTADAVIT[®] QUANTUM[®] column.

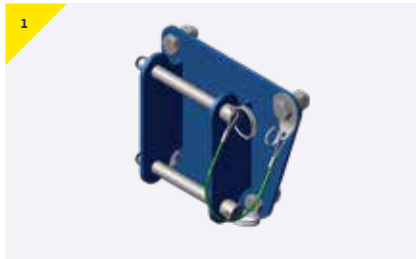
Warning: For this configuration a sheave bracket column is required.



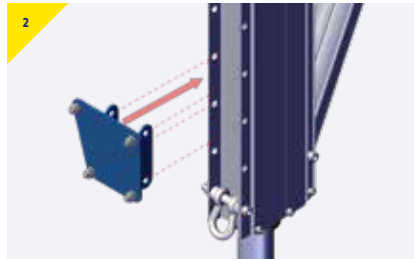
Appropriate PPE should be worn: ➤ Gloves ➤ Protective Footwear

Guardian® Checkmate Bracket - [US-RAWB001200]

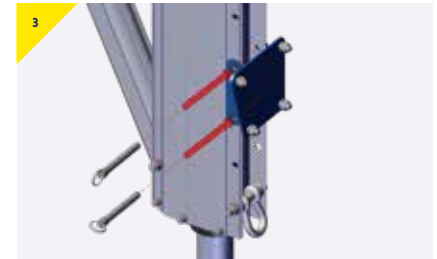
Assembling the **Guardian Checkmate Bracket** onto a **PORTA DAVIT^{QUANTUM}** column.



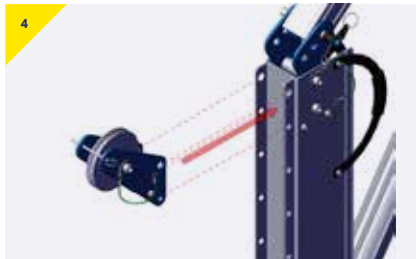
- 1 The bracket comes with the pins supplied, as shown above.



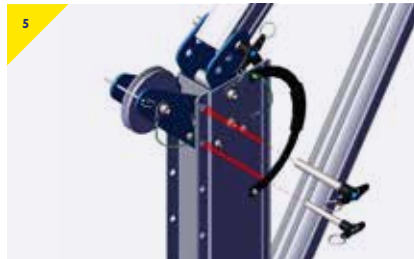
- 2 Remove the pins and present the bracket to the column, aligned to the holes as shown.



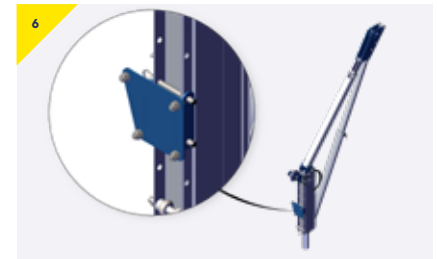
- 3 Insert both pins to ensure the bracket is securely attached.



- 4 Present the sheave bracket* to the top of the column, aligning with the top holes as shown.



- 5 Secure using the pins provided.



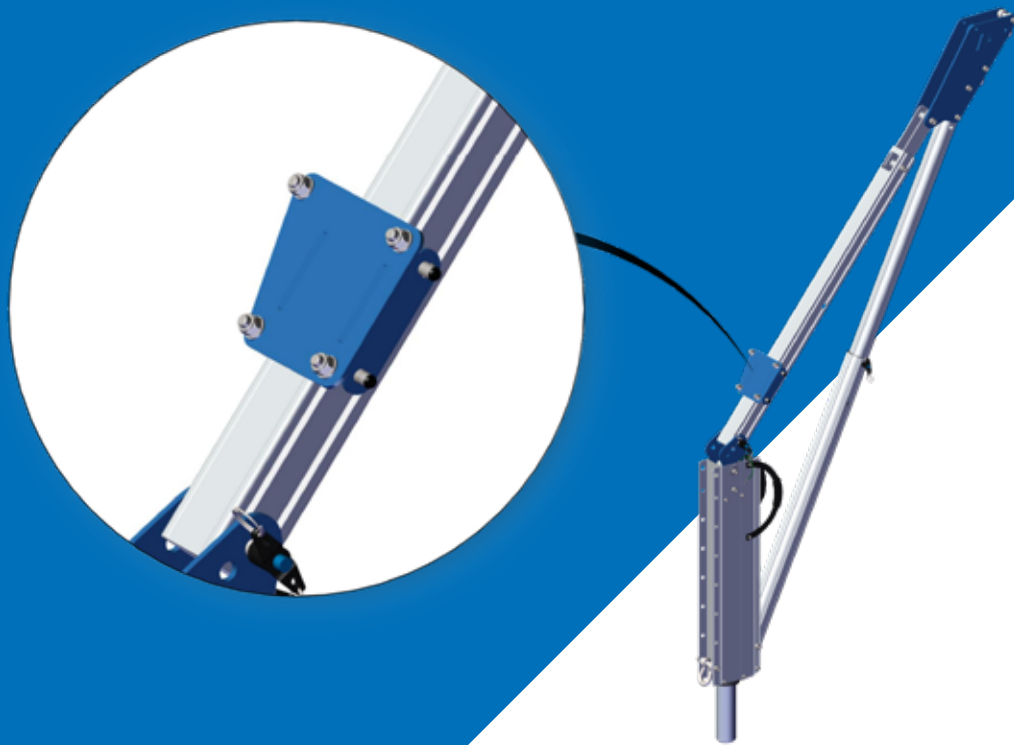
- 6 The bracket is secured and ready for the device to be attached.

*US-RAW000095 - Sheave bracket PDQ Column
Medium Sheave (4-7mm).

➤ Assembly Instructions: PORTA DAVIT QUANTUM® Backstay

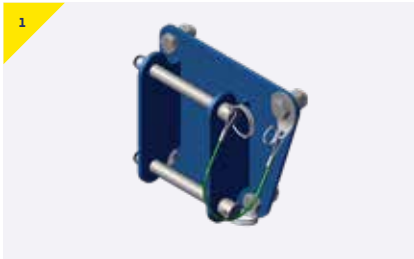
The following instructions detail the assembly of the Guardian Checkmate bracket [US-RAWB001206] for the PORTA DAVIT QUANTUM Backstay.

Appropriate PPE should be worn: ➤ Gloves ➤ Protective Footwear

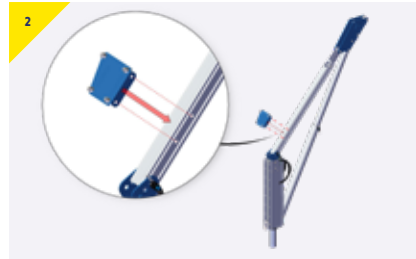


Guardian® Checkmate Bracket - [US-RAWB001206]

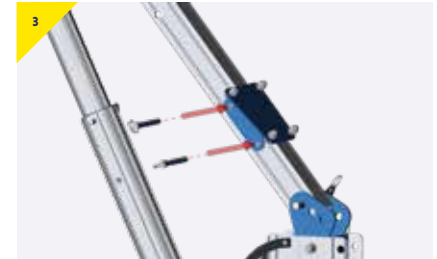
Assembling the **Guardian Checkmate Bracket** onto a **PORTA DAVIT^{QUANTUM}** Backstay.



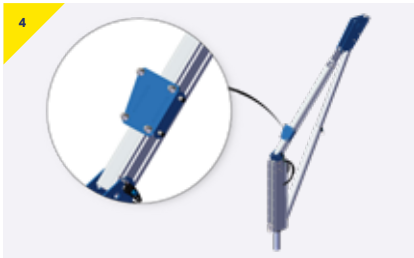
- The bracket comes with the pins supplied, as shown above.



- Remove the pins and present the bracket to the backstay, aligned to the holes as shown.



- Insert both pins to ensure the bracket is securely attached.

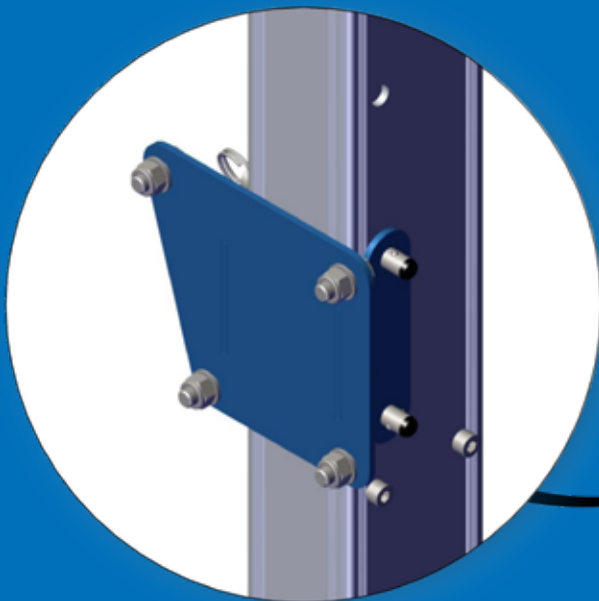


- The bracket is secured and ready for the device to be attached.

➤ Assembly Instructions: PORTX® DAVIT Single Winch

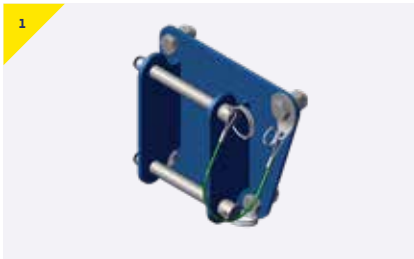
The following instructions detail the assembly of the Guardian Checkmate bracket [US-RAWB001200] for the PORTX® DAVIT with a single winch.

Appropriate PPE should be worn: ➤ Gloves ➤ Protective Footwear

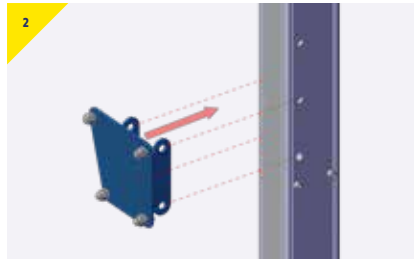


Guardian® Checkmate Bracket - [US-RAWB001200]

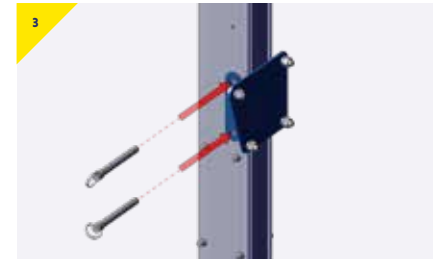
Assembling the **Guardian Checkmate Bracket** onto a **PORTX® DAVIT** with a Single Winch.



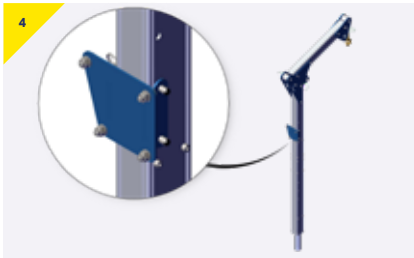
> The bracket comes with the pins supplied, as shown above.



> Remove the pins and present the bracket to the column, aligned to the holes as shown.



> Insert both pins to ensure the bracket is securely attached.

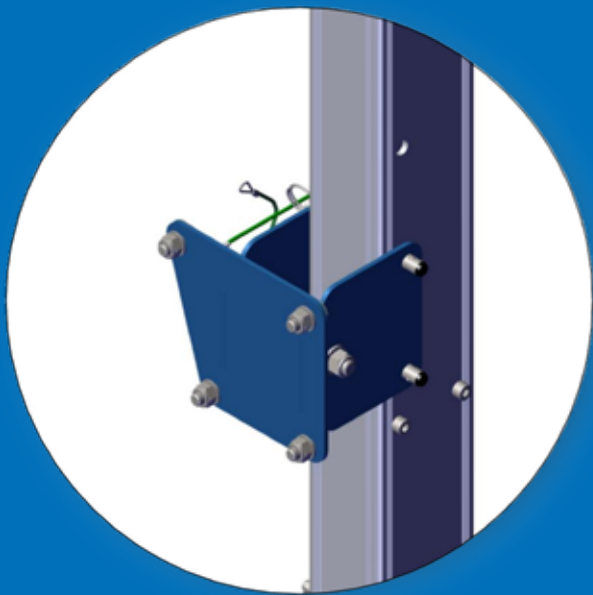


> The bracket is secured and ready for the device to be attached.

➤ Assembly Instructions: PORTX® DAVIT Double Winch

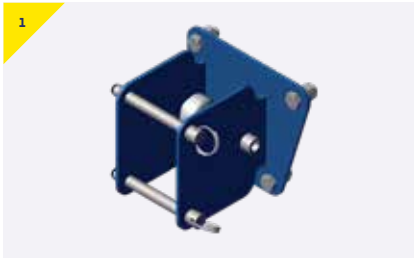
The following instructions detail the assembly of the Guardian Checkmate bracket [US-RAWB001209] for the PORTX® DAVIT with a double winch.

Appropriate PPE should be worn: ➤ Gloves ➤ Protective Footwear

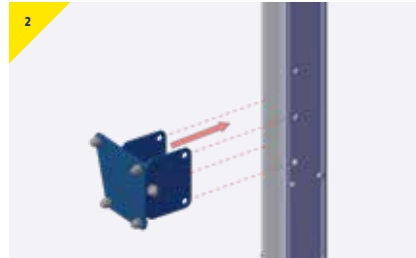


Guardian® Checkmate Bracket - [US-RAWB001209]

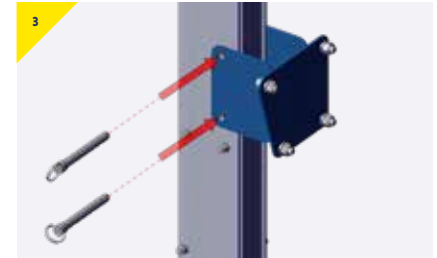
Assembling the **Guardian Checkmate Bracket** onto a **PORTX® DAVIT** with a double Winch.



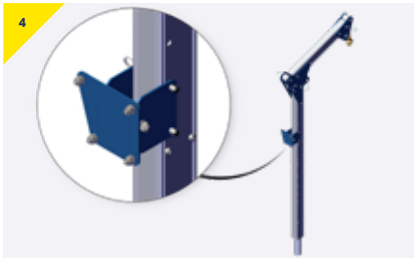
- > The bracket comes with the pins supplied, as shown above.



- > Remove the pins and present the bracket to the column, aligned to the holes as shown.



- > Insert both pins to ensure the bracket is securely attached.



- > The bracket is secured and ready for the device to be attached.

Contact Us

REID Lifting Inc, USA

7900 International Drive,
Suite 300,
Bloomington,
MN 55425
USA

- > +1-(888)-721-6411
- > info@reidlifting.com
- > us.reidlifting.com

All information herein is copyright protected by REID Lifting Ltd. All company and product names are Trade Mark and Trade Name protected and all REID Lifting Ltd. Product IPR is protected under Patents, Patents Pending and/or Design Rights.



Printed using environment friendly processes and materials.